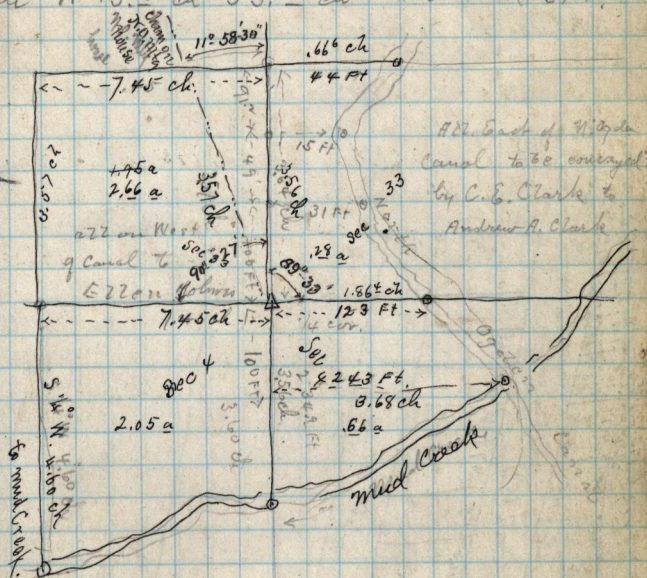


Copy of deed from Newman D. Blodgett, dated March 26-1870 - E 82-
 Part of S. E 1/4 Sec 33 T-7-N-R-1-W, Bsq. at S.W. cor & said 1/4 Sec E 13.15 ch N. 3.64 ch N 13.15 ch S 3.56 ch 4a - 2-R-37 P.



Survey at North Ogden
 April 29-1889
 For Charles E. Clark.

Copy of deed from John Woodfield to John Holmes dated Aug 7-1875 - J-261 - Pt of N. W 1/4 Sec. 4 T-6-N-R-1-W, Bsq. 7.75 ch W. from S.E. cor. W. 10.50 ch, N 1/4 E 2.00 ch S 1/4 E 10.50 ch, S 1/4 W, 1.94 ch to beg. 2.10 a, 30, Beg. 12.23 ch E, of N.W. cor. said 1/4 Sec. thence S 1/4 W, 17.10 ch, S 1/4 E 21.00 ch, N 1/4 E 12.57 ch 100 of 100, N 1/4 E 4.40 ch, W. 20.45 ch, to beg. 35.76 a.

Copy of deed from MARY ANN ORTON et al, to JOHN HOLMES dated DEC. 10-1877 - 41 - Pt of S. W 1/4 Sec. 33-T-7-N-R-1-W Bsq. 12.23 ch E. from S.W. cor. E 20.50 ch, 3.40 ch W. 20.50 ch, S 3.40 ch, to beg. 6.96 a.